

**MODEL : HBD-500-1000**

**BATTERY ENERGY STORAGE SYSTEM for ENERGY MANAGEMENT**



**Design Standards**

- HBD Ⓐ Series is a new range of secure, integrated battery energy storage systems. This modular solution includes batteries, PCS, LCAC, FSS, and EMS, with optional components such as STS, PV inverters, PV modules, ATS, and auxiliary units to meet diverse application needs.
- Emergency backup, peak shaving, Arbitrage, Grid Service, Self - consumption

**Benefits**

- High Energy Density: Top-tier 314Ah LFP cells
- Comprehensive Safety Protection: Multi-layer protection
- High Compatibility: Compatible with multiple electrical solutions
- Intelligent Operation: Smart EMS

**Warranty**

3 years after export from the factory or the Energy Throughput achieve 4590kWh per kWh which comes first;

**General Information**

Rated Output Power@25°C		500kVA
Rated Power Factor		1 lagging~ 1 leading
Rated Output Voltage		380V@50Hz/60Hz,3ph. (400V & 415V available)
Rated Battery Storage Capacity		1045kWh
Output	Terminals	Copper Busbar
	Sockets	Option
Protection Class		IP54
Loading Dimension(W*D*H)		4800*2250*2250mm
Net.Weight		14000kg
Loading Capacity	20' GP	1 unit
	40' HC	NA
Discharge Temperature Range		-20~50°C(> 45°C derating)
Max Altitude		3000m(> 2000m derating)

## ➤ Liquid Cooling System

LiFePO<sub>4</sub> BATTERY

Long Life Design Up to **8000** cycles

## ➤ High Quality Based on

Specification Consistency of CELLS~!

## ➤ All-in-One Design

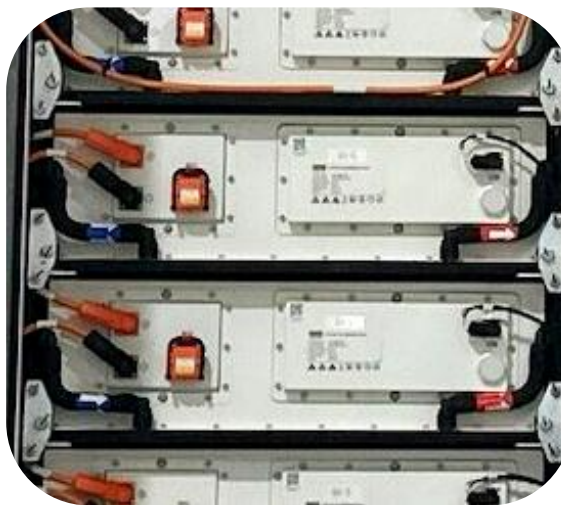
INTELLIGENT PCS with EMS

EASY OPERATION ON ONE  
SCREEN.



## ➤ C-3 Level Anti-Corrosion Suitable With Heavy Duty

*Fits the practical application & guaranteed by high quality manufacturing technology.*



### Battery

Cell Type	LFP(LiFePO <sub>4</sub> )
Pack Capacity	52.25kWh
Pack Rated Voltage	166.4Vdc
Cyclic Life	8000 Times(0.5C@90%DOD)
Battery Voltage of Rack	832Vdc
Connection of Rack	5S8P

### PCS

Max. Current (AC)	800A
Max. Output Power	550kVA
Rated Output Power	500kW
AC Input Voltage Range	400Vac(-15%~+15%)
Rated Frequency Range	50/60Hz(±2.5Hz)
PF	1 lagging~1 leading
AC Connection	3W+N+PE
Max. Efficiency	98.5%
Transformer	N/A
Communication	CAN/RS485
Grid-tied Certificates	EN50549,NRS 097, C10/11,VDE4105, G99, AS4777, IEC61727&62116, CEI 0-21, Austria TOR EZA Type A & B, 217001/2, NTS631, The Saudi Arabian
Safety & EMC Certificates	IEC61000, IEC62477

### Cooling System

Cooling type	LCAC
--------------	------

### Fire Protection

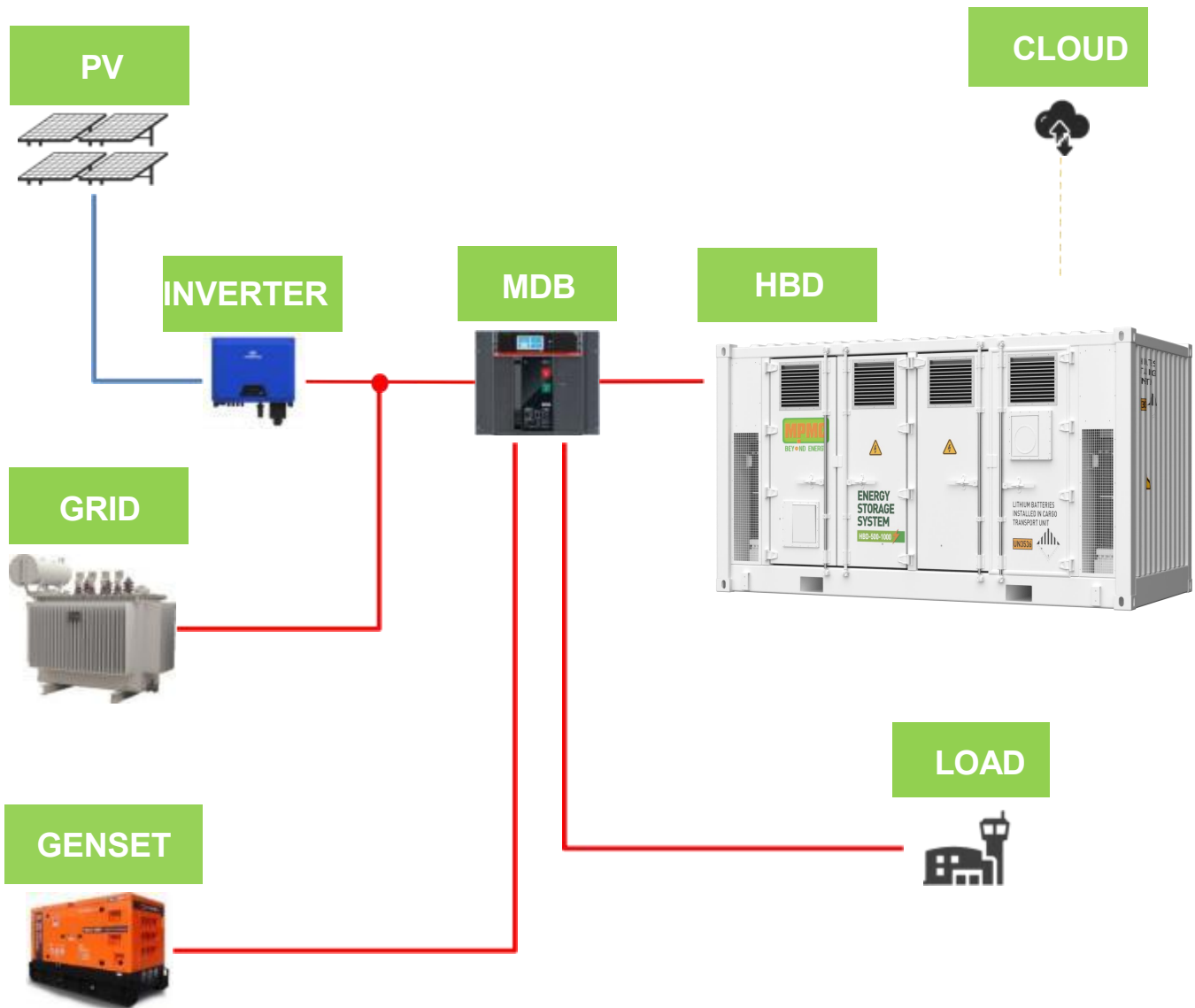
Type	Aerosol (CE)
------	--------------

### EMS

Display and Monitor	Local screen
Function	Energy management and coordinated control of energy storage system



## Typical Application



MPMC USA



MPMC CN

### MPMC POWERTECH CORP.

www.mpmc-china.com | www.mpmc-group.com  
sales@mpmc-china.com

Photographs are for illustrative purposes only and may not reflect final specification.

### Follow us



<https://www.facebook.com/mpmcgroup>



<https://www.linkedin.com/company/mpmcpowertech/>



<https://www.youtube.com/user/MPMCGenerator>

All information in this document is substantially correct at time of printing and may be altered subsequently. Final weight and dimensions will depend on completed specification.